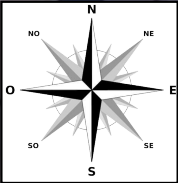




SIBUET ENVIRONNEMENT

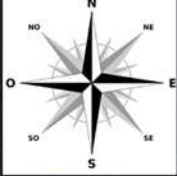
DEMANDE D'AUTORISATION ICPE

**Demande d'autorisation environnementale
PJ n°2 – Eléments graphiques**



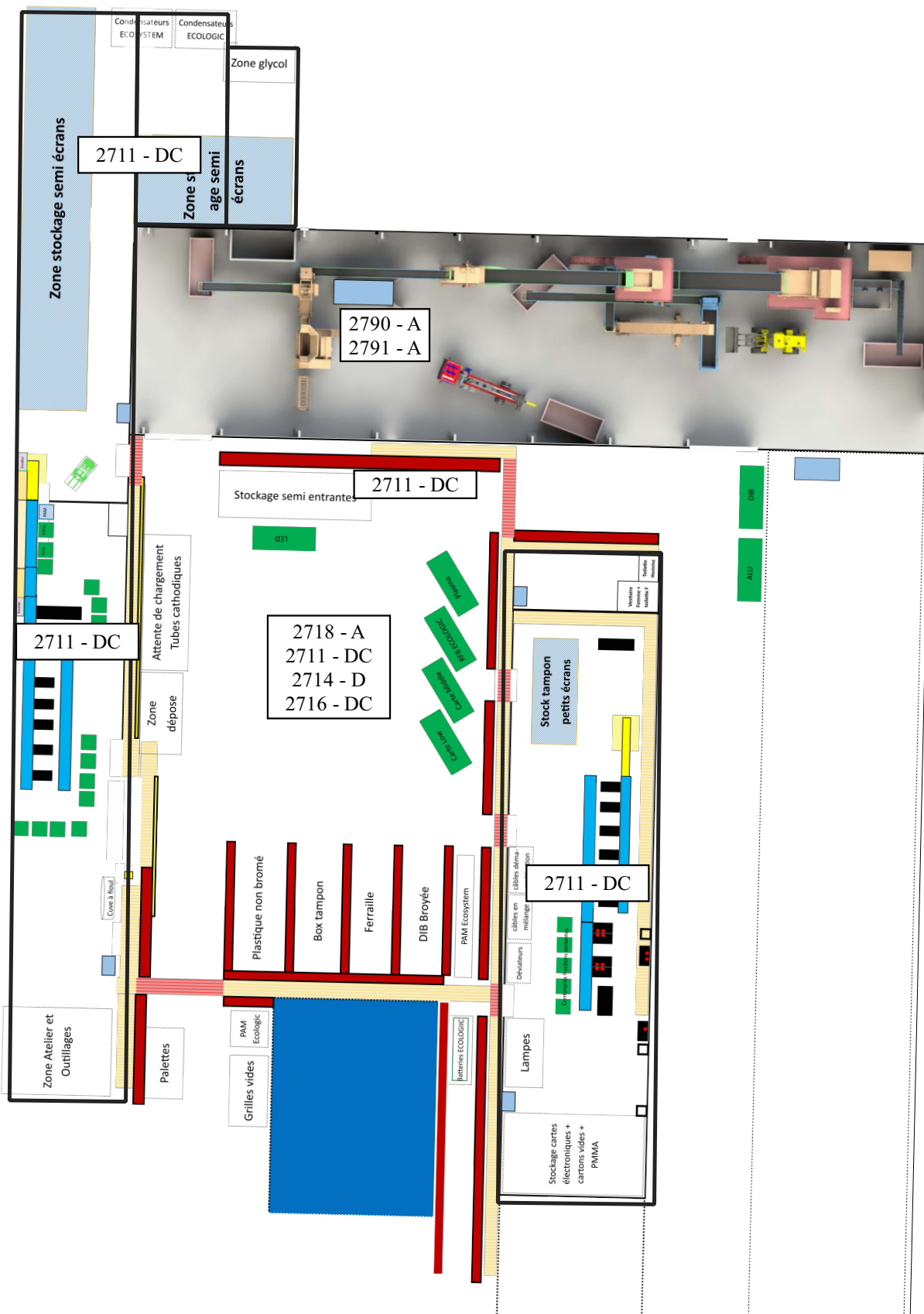
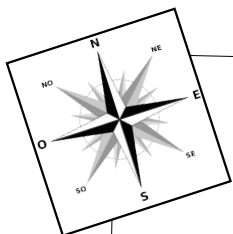
Légende

 Limite



Légende

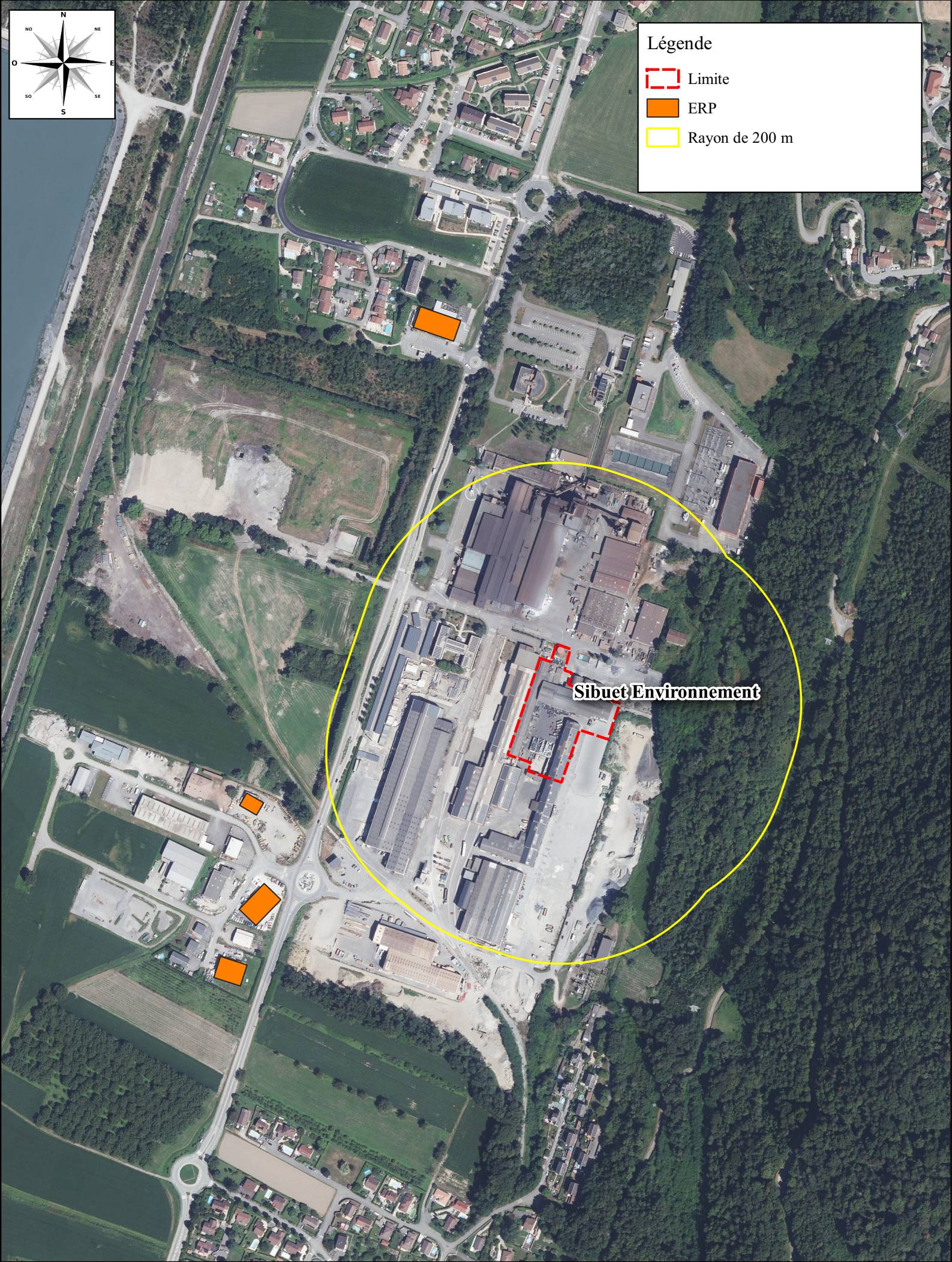
 Limite

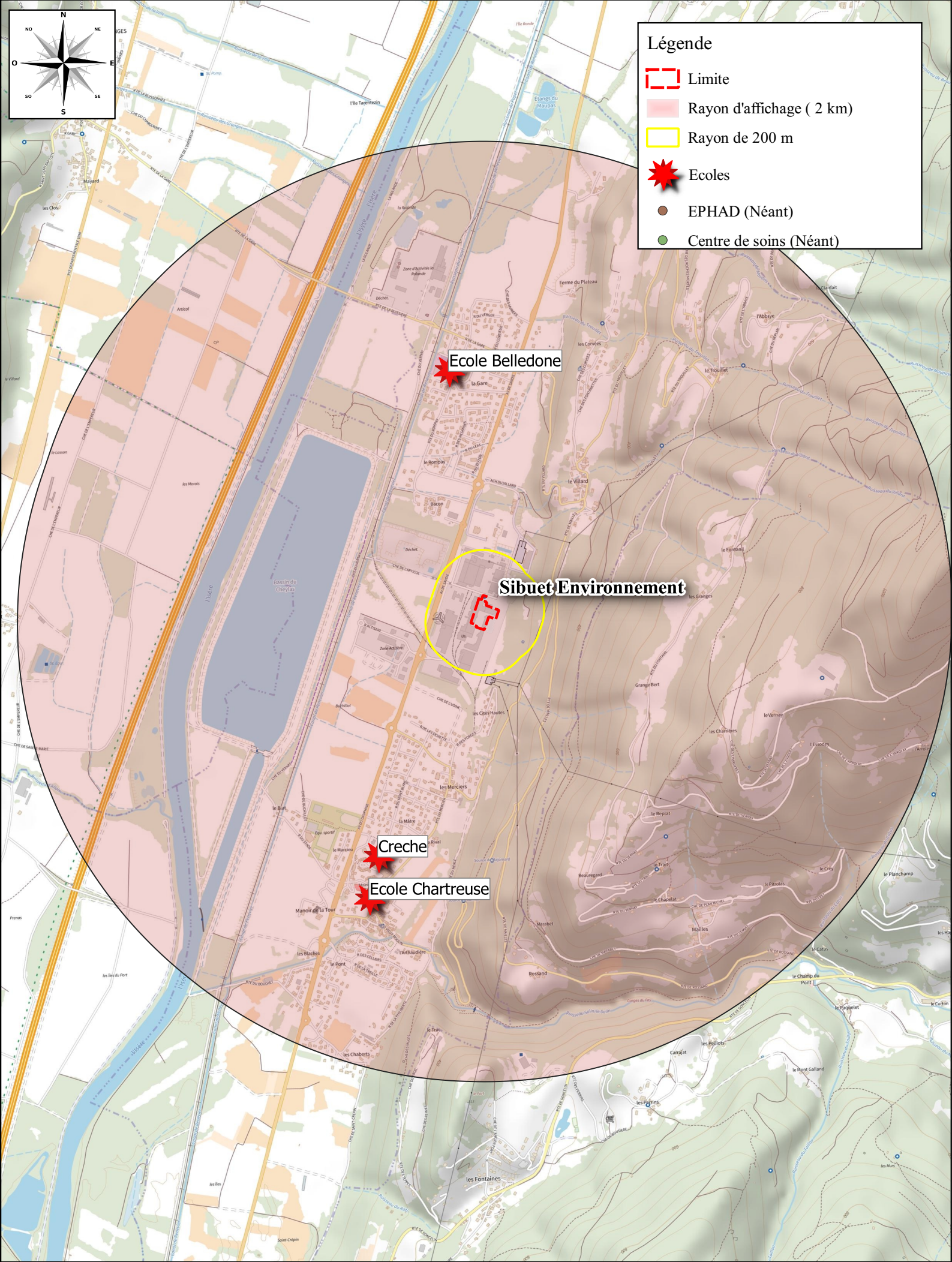


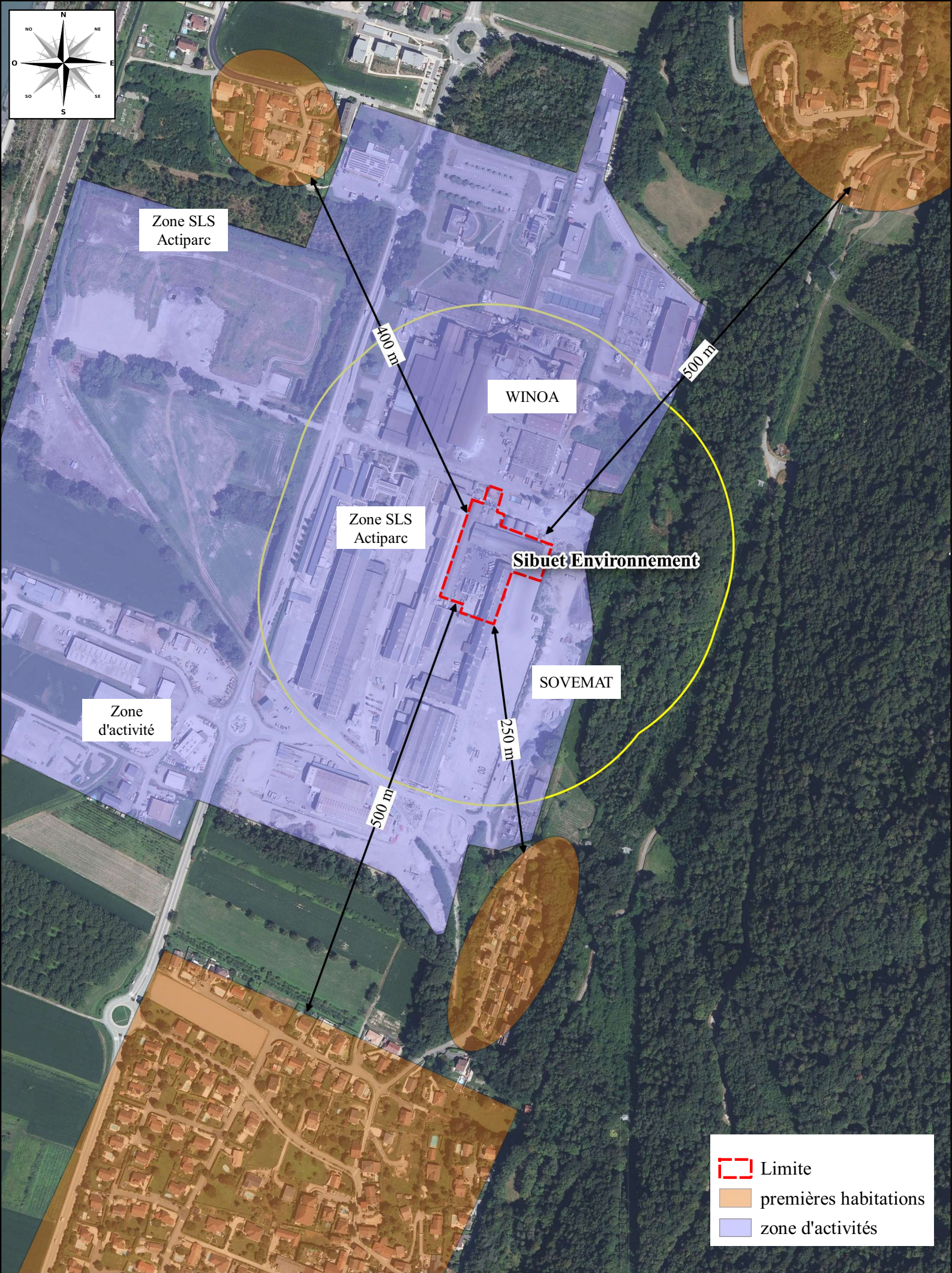
DDAE - Sibuet Environnement - Site du Cheylas

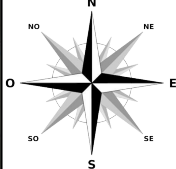
0 10 20 m

Plan des installations classées pour la protection de l'environnement





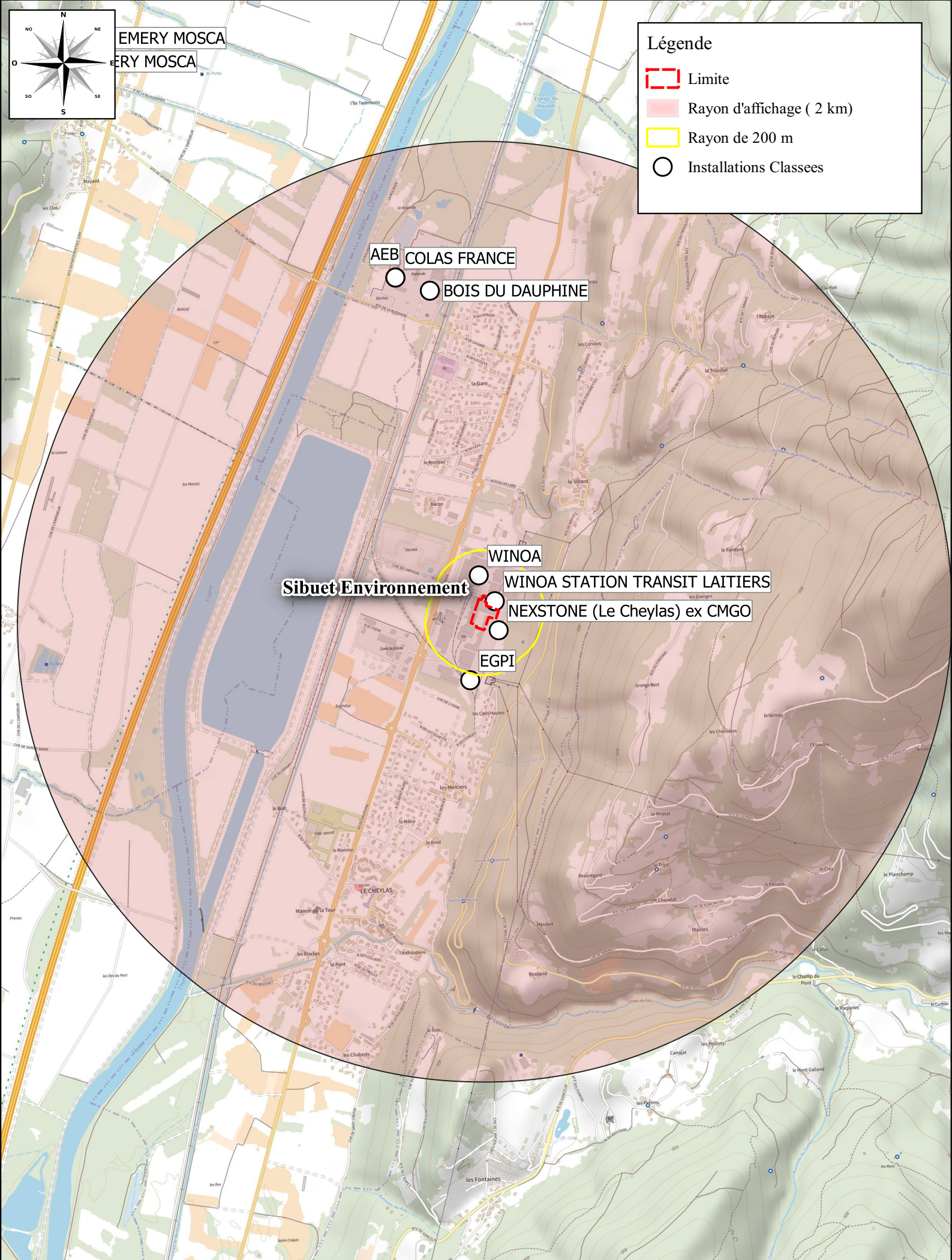




EMERY MOSCA
EMERY MOSCA

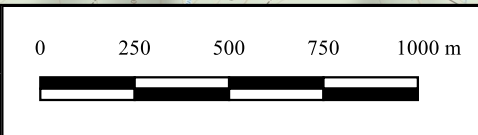
Légende

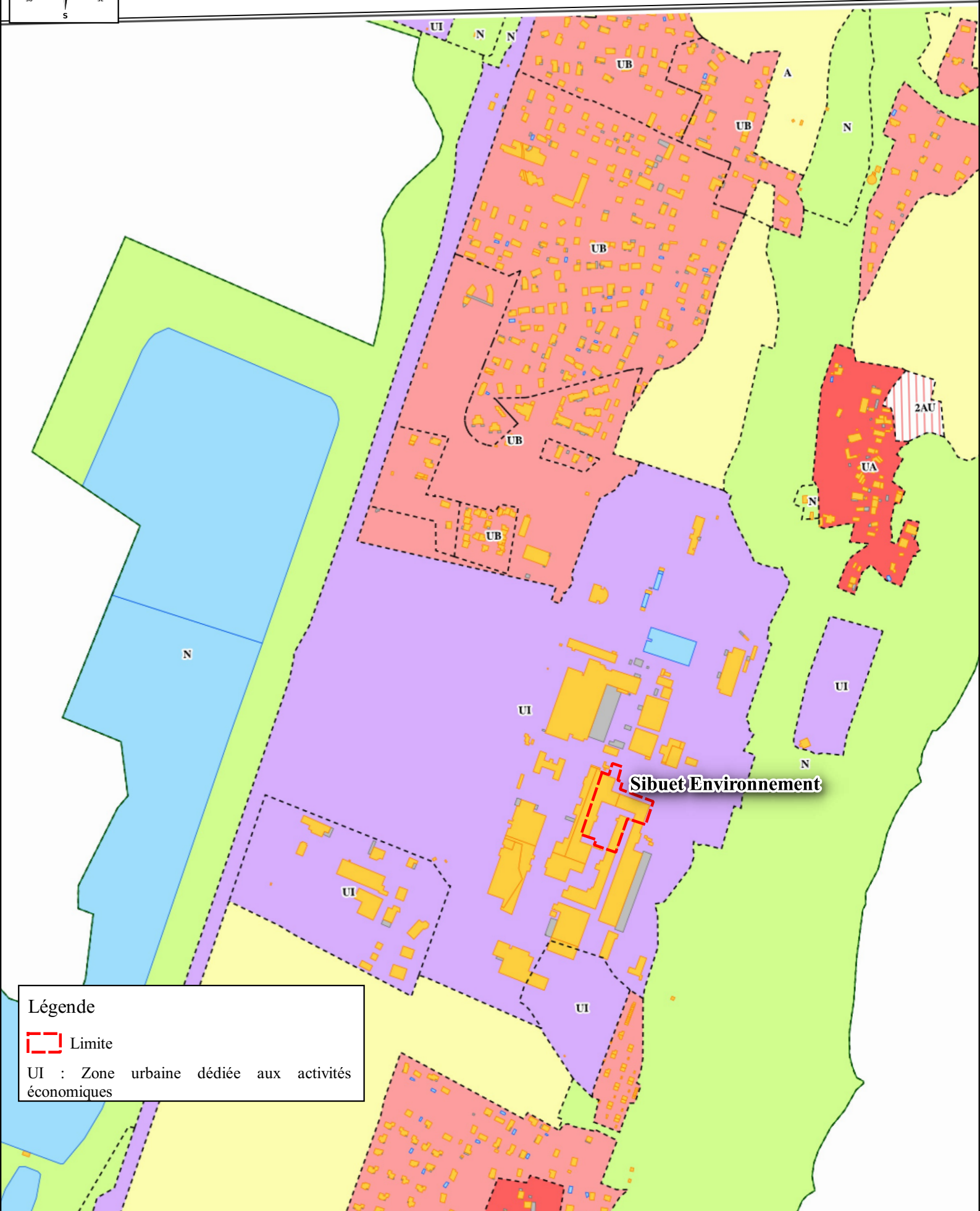
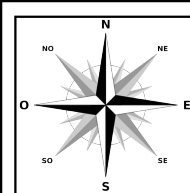
- Limite
- Rayon d'affichage (2 km)
- Rayon de 200 m
- Installations Classees



DDAE - Sibuet Environnement - Site du Cheylas

Installations classées dans un rayon de 2km





Légende

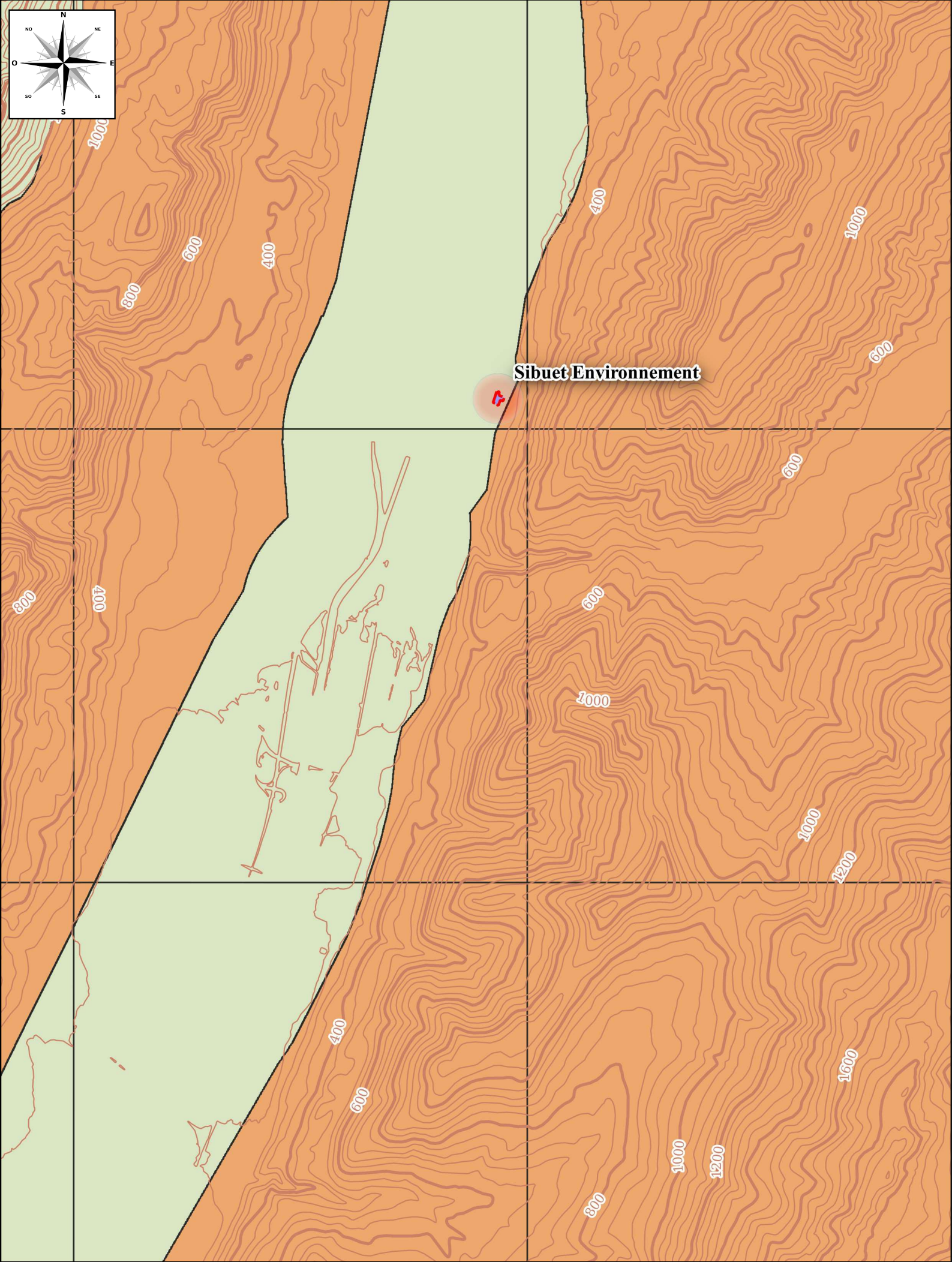


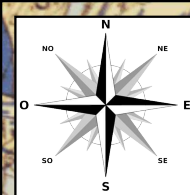
Limite

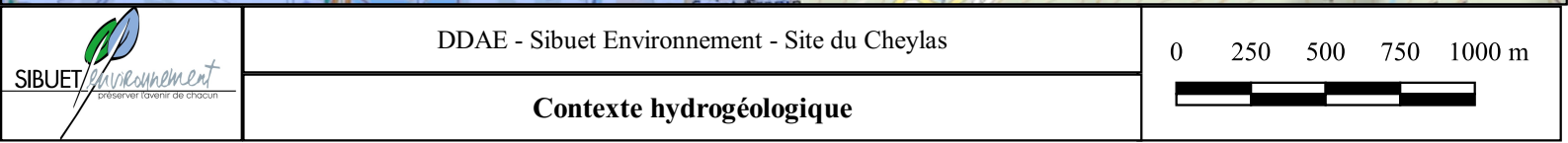
UI : Zone urbaine dédiée aux activités économiques

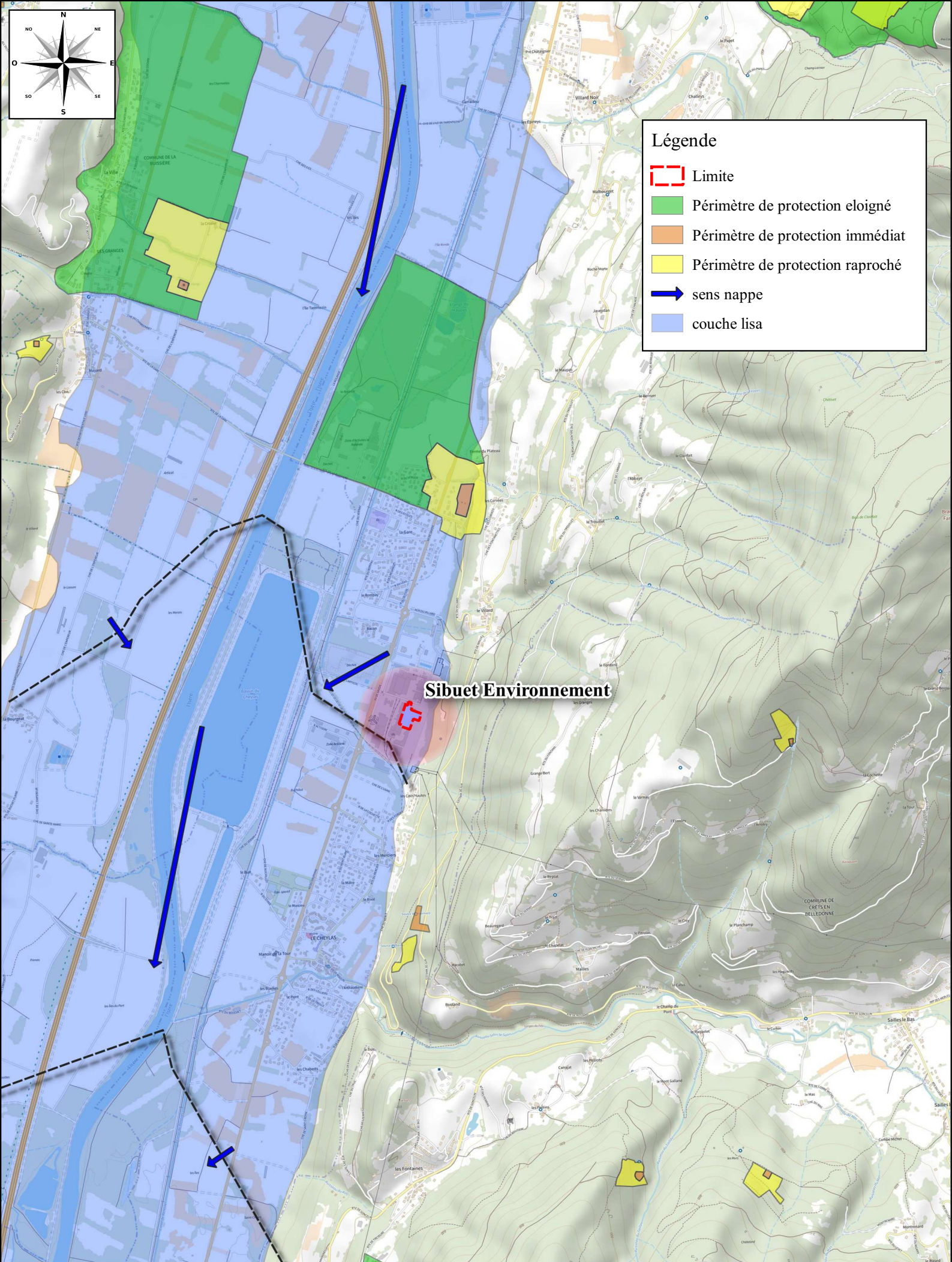
Sibuet Environnement

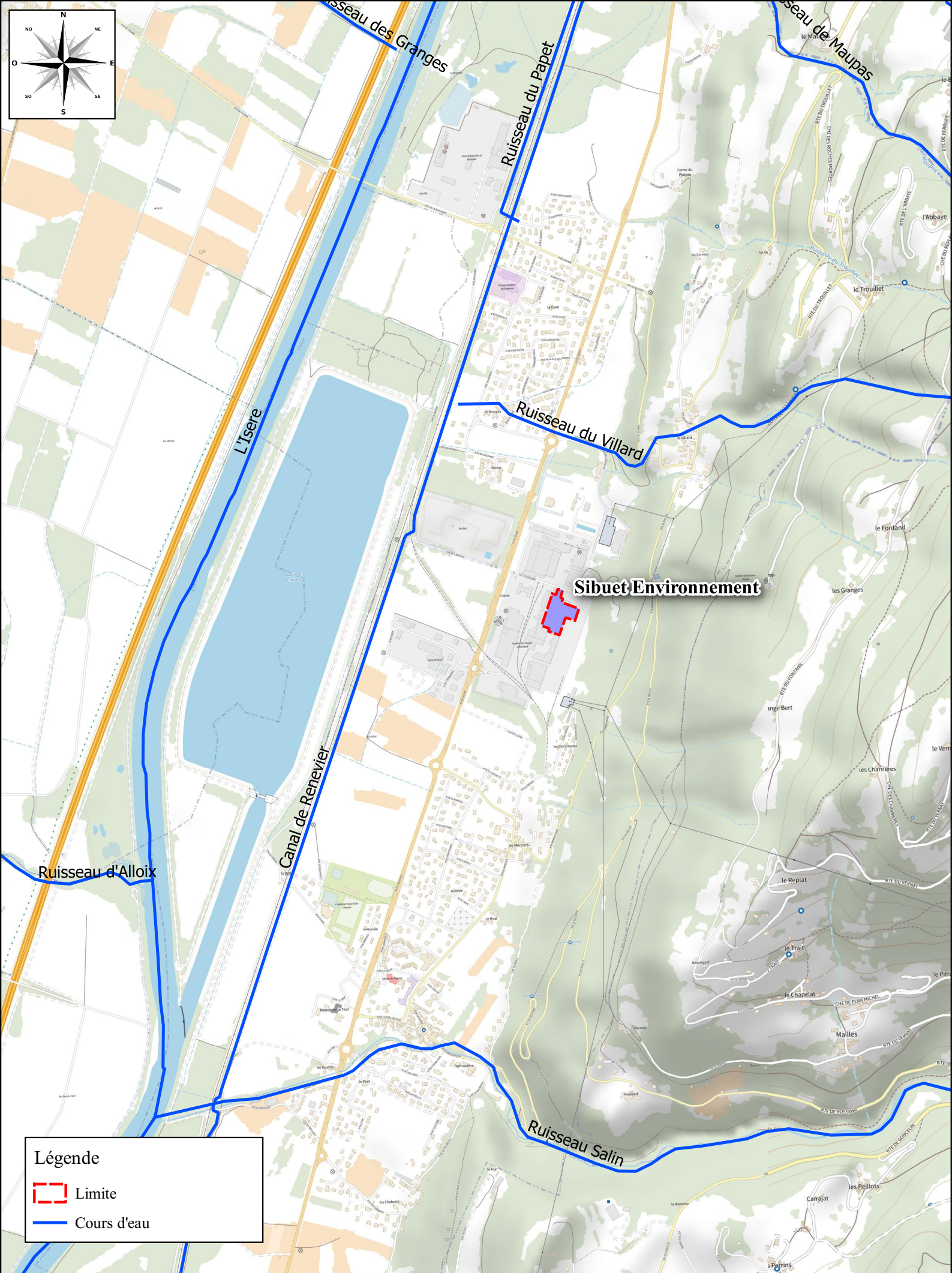
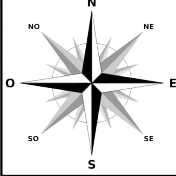








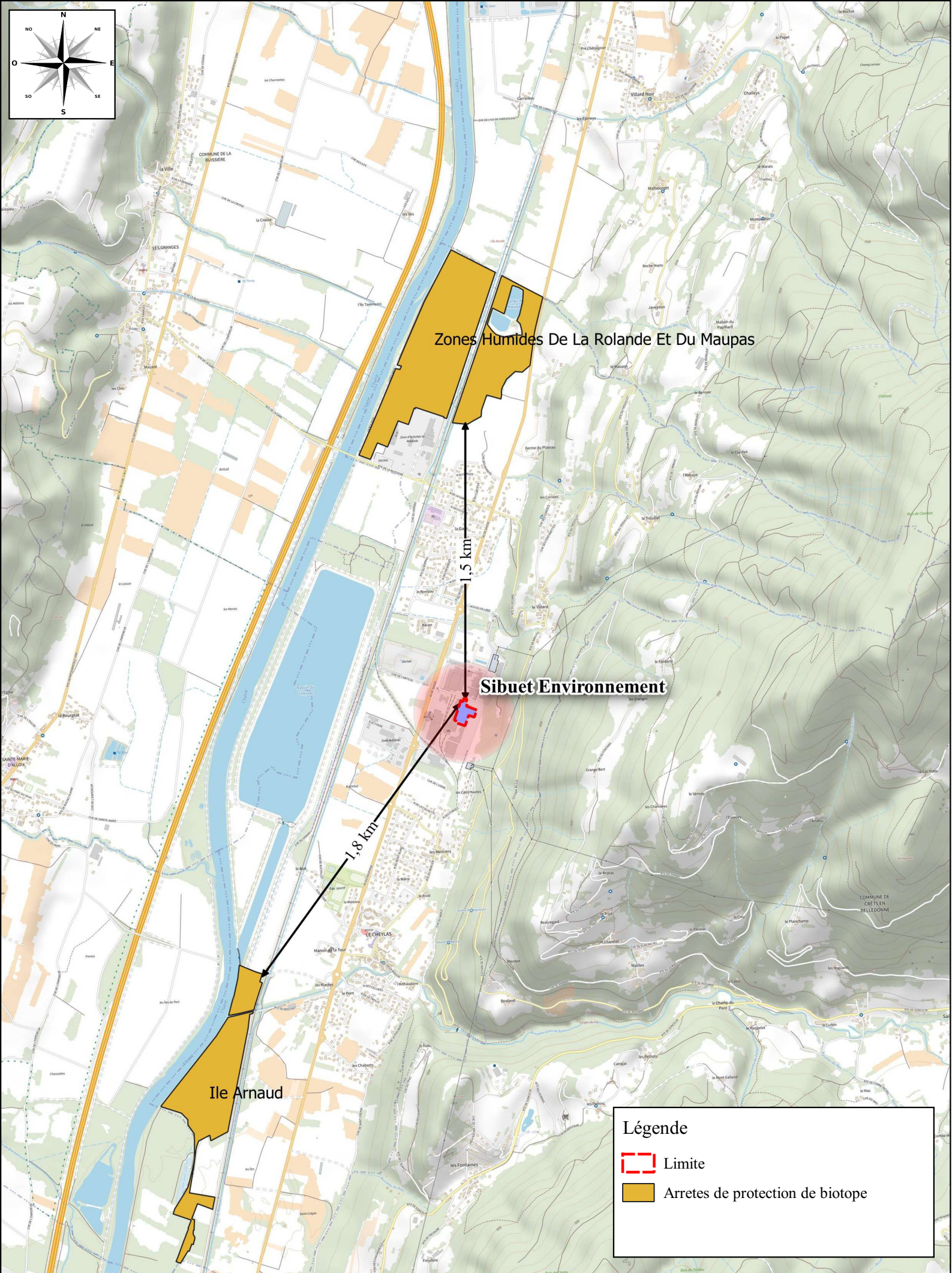
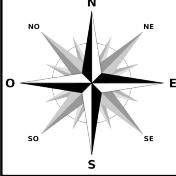




Légende

Limite

Cours d'eau




Zones Humides De La Rolande Et Du Maupas

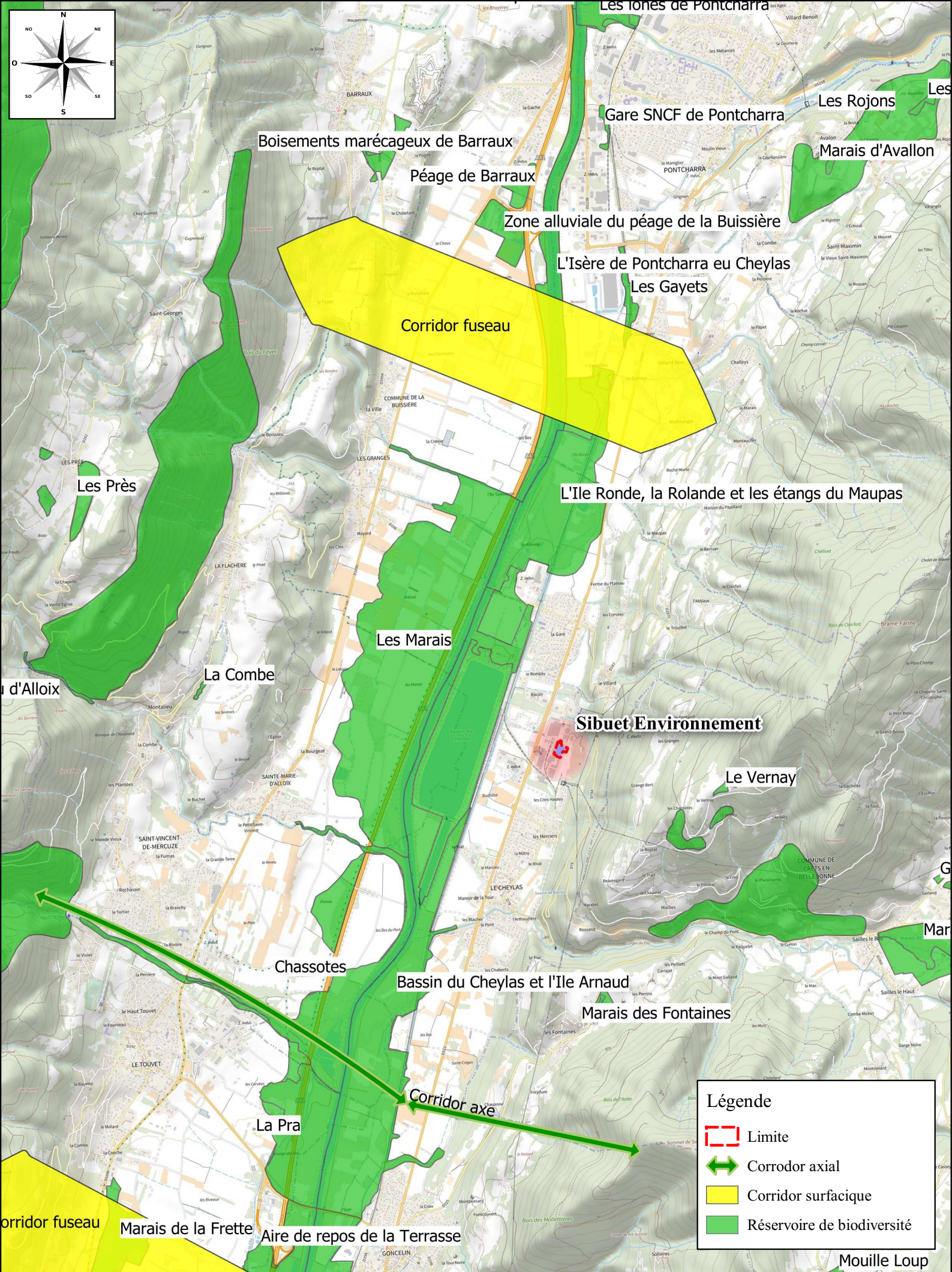
Sibuet Environnement

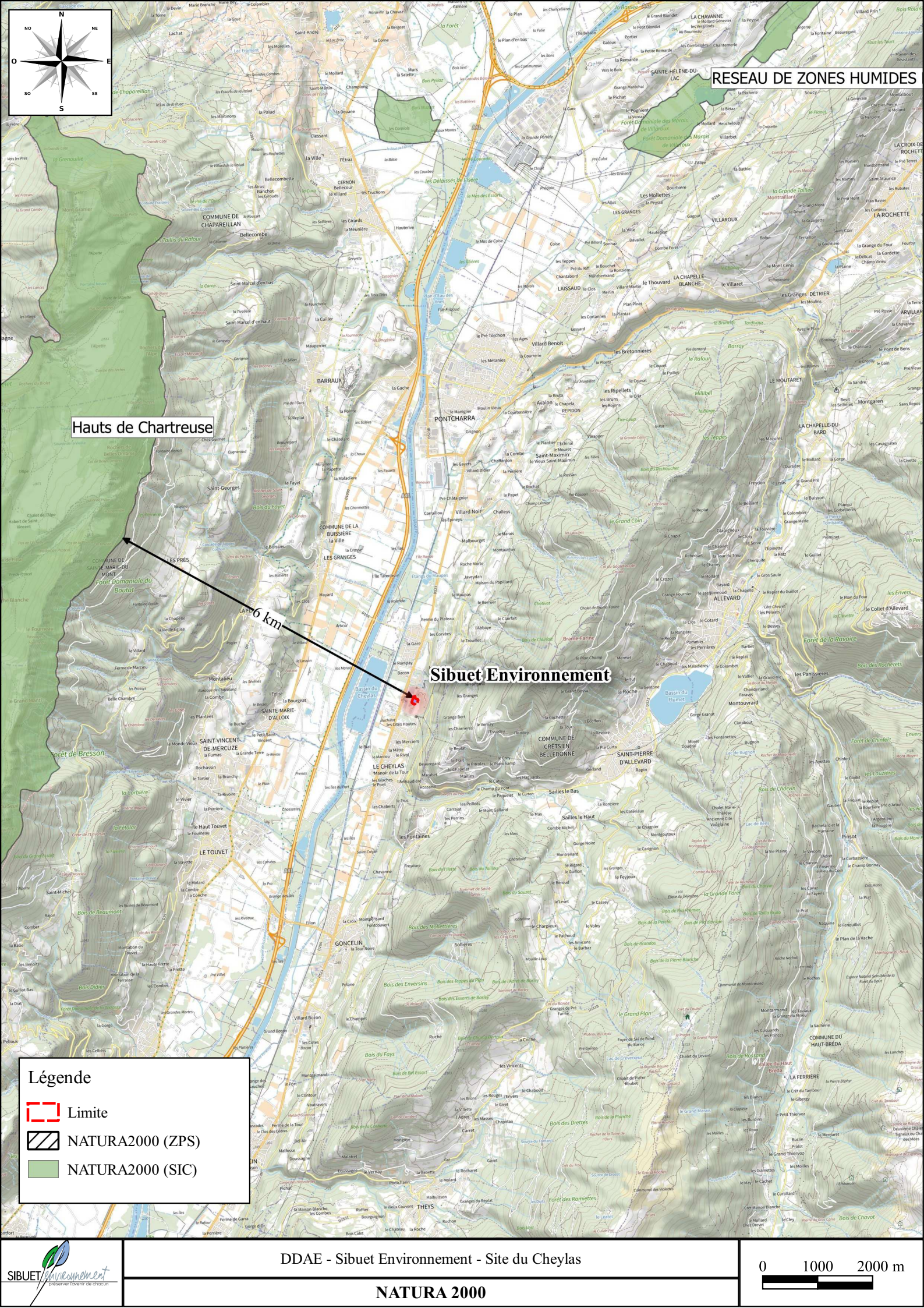
Ile Arnaud

Légende

 Limite

 Arretes de protection de biotope





RESEAU DE ZONES HUMIDES

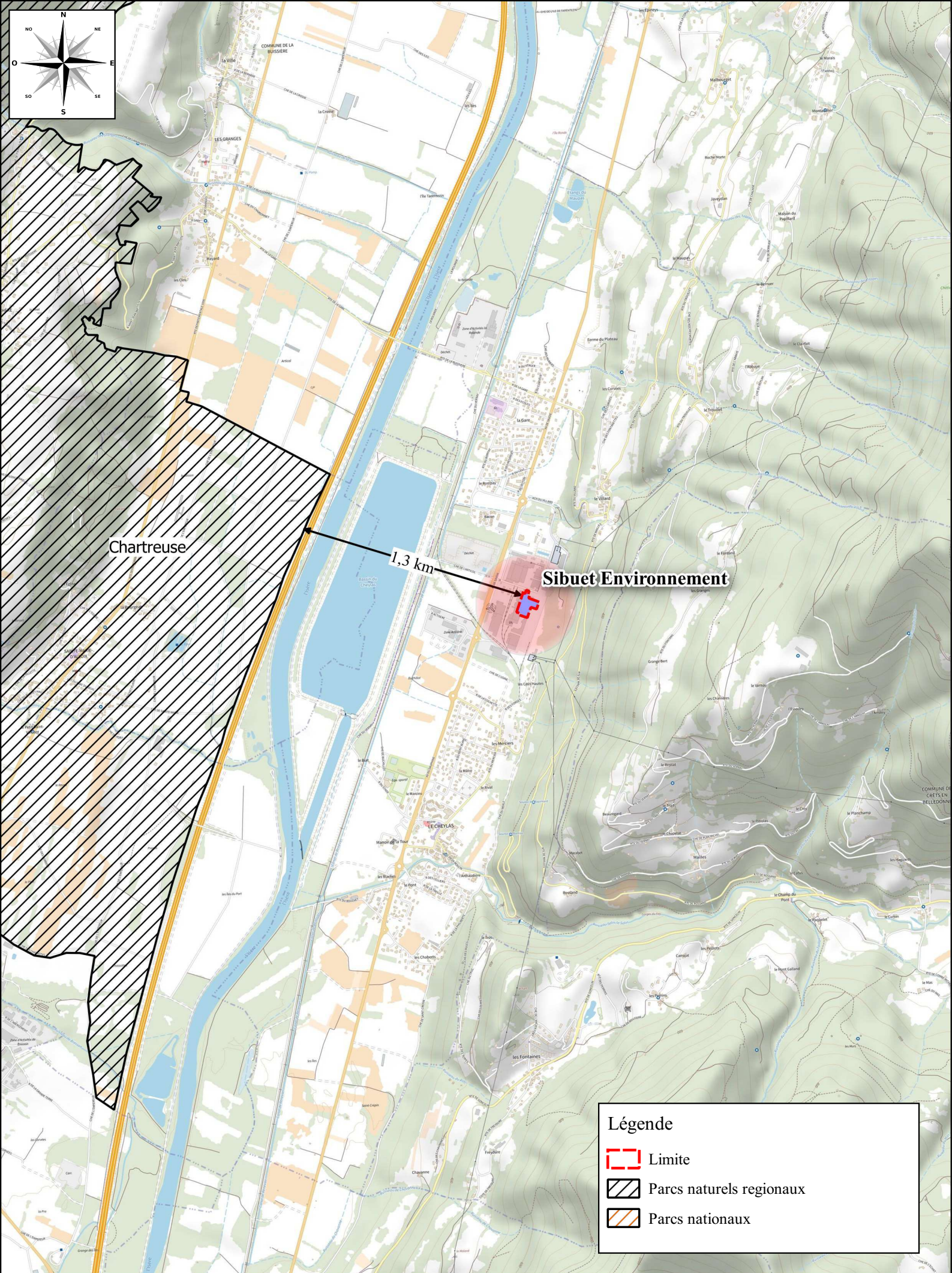
Hauts de Chartreuse

Sibuet Environnement

6 km

Légende

- Limite
- NATURA2000 (ZPS)
- NATURA2000 (SIC)






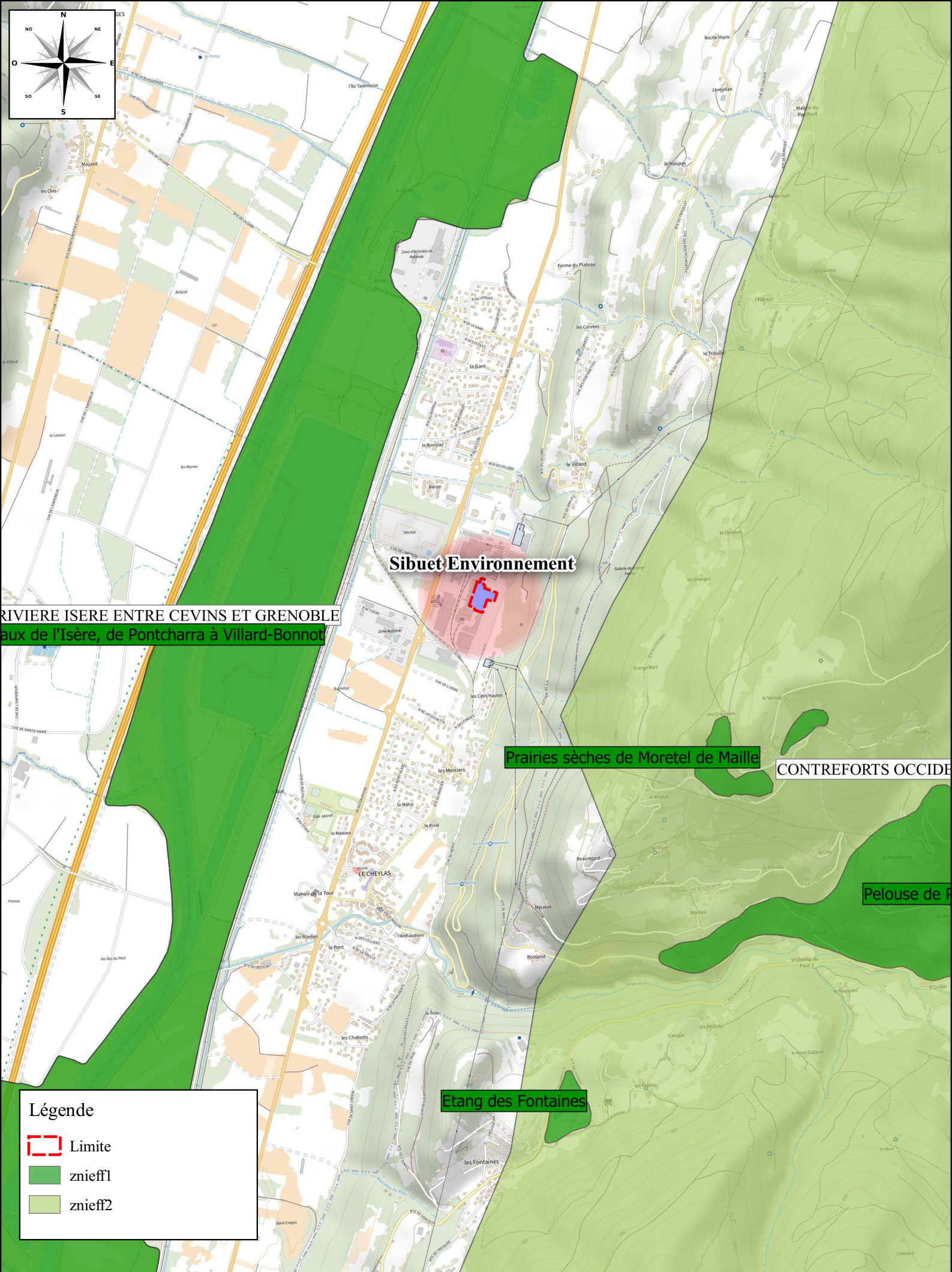
Chartreuse

1,3 km

Sibuet Environnement

Légende

-  Limite
-  Parcs naturels regionaux
-  Parcs nationaux



RIVIERE ISERE ENTRE CEVINS ET GRENOBLE
aux de l'Isère, de Pontcharra à Villard-Bonnot

Sibuet Environnement

Prairies sèches de Moretel de Maille

CONTREFORTS OCCIDE

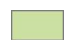
Pelouse de P

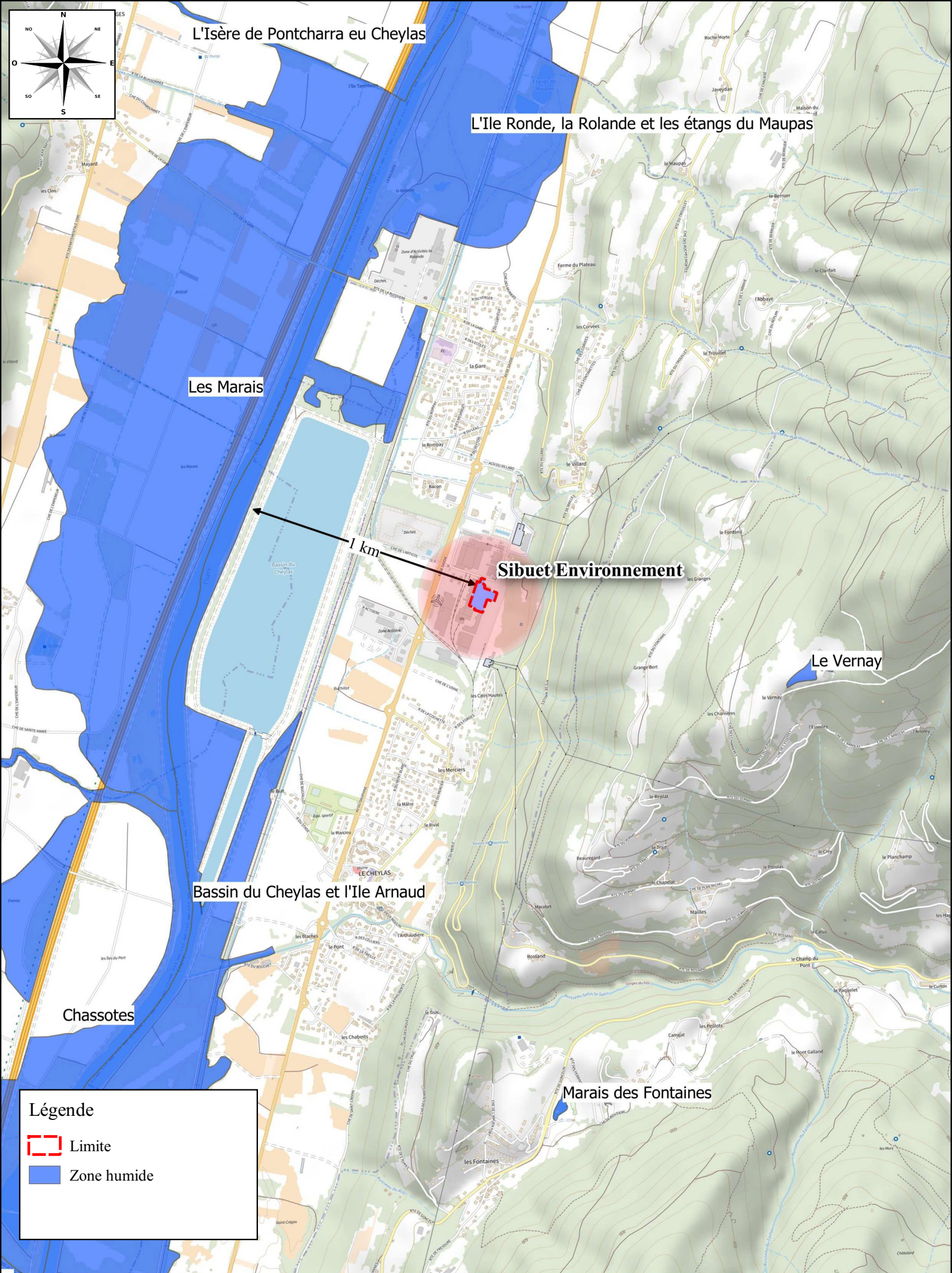
Etang des Fontaines

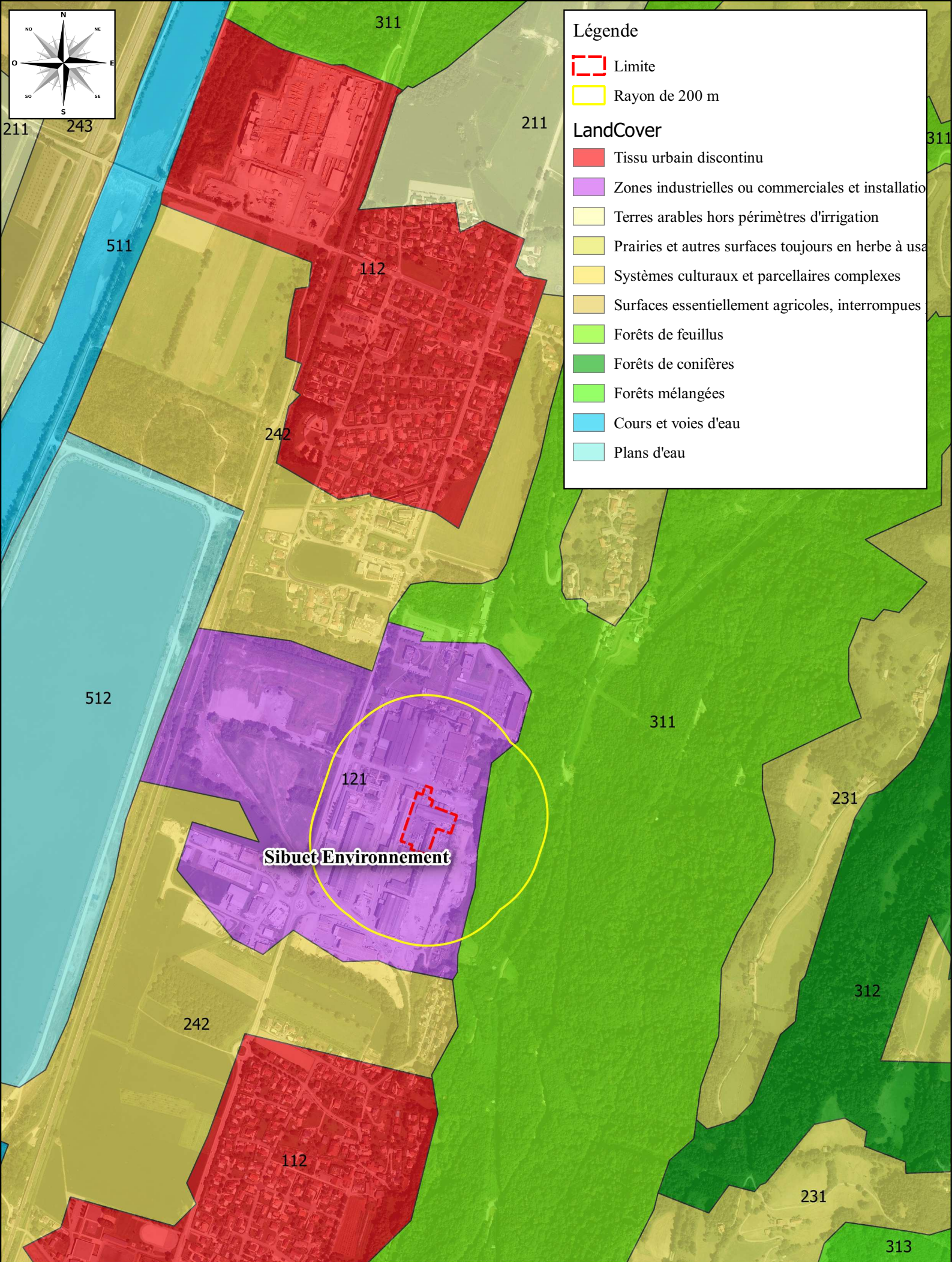
Légende

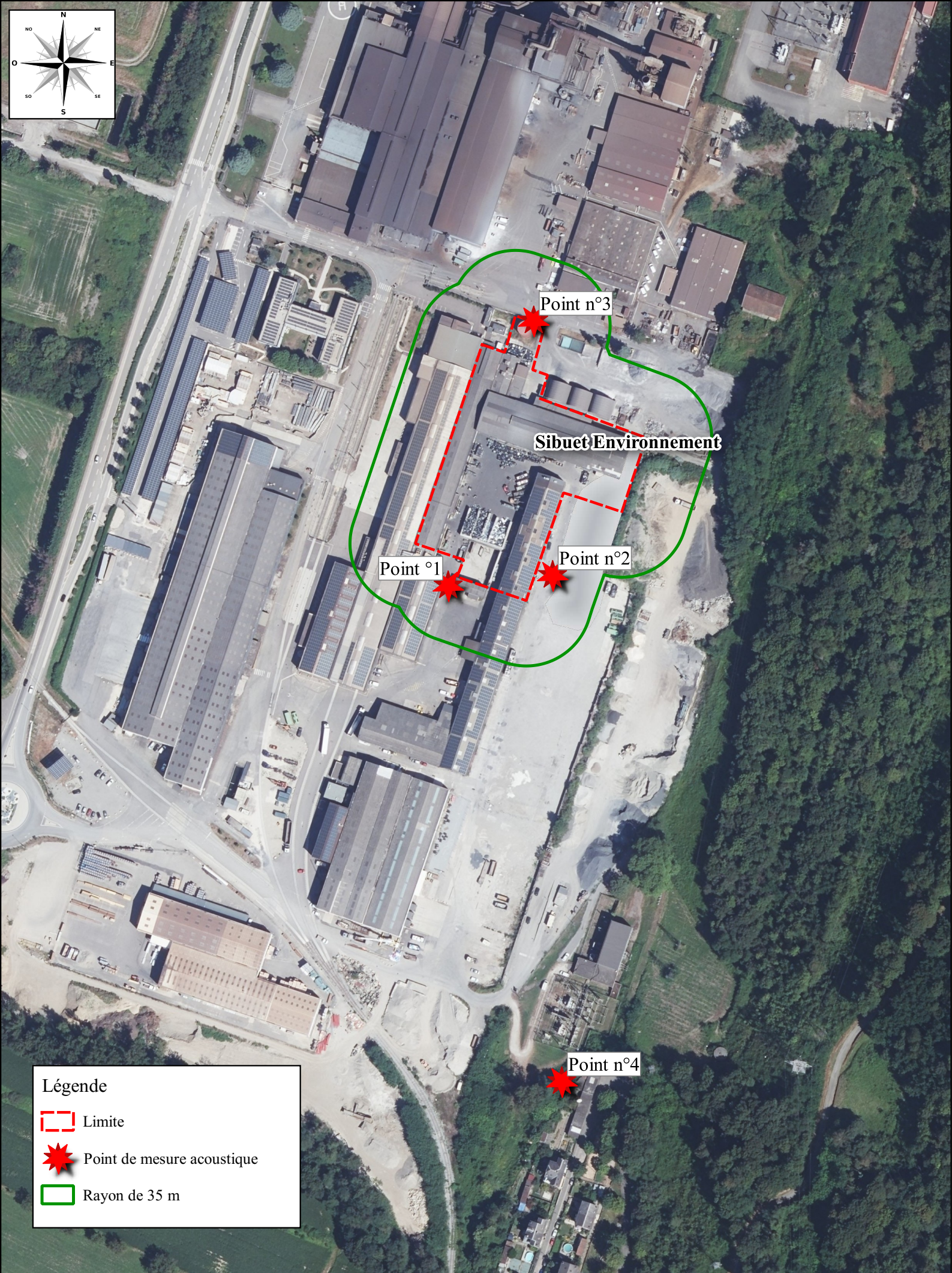
 Limite

 znieff1




 znieff2







Légende

-  Limite
-  Point de mesure acoustique
-  Rayon de 35 m